


**Duke University School of Nursing**



**Gero Boot Camp: A "Win-Win", Promoting the Professional Development of Geriatric Resource Nurses While Enhancing Student Nurse Learning**

Jill Brennan-Cook, DNP, RN, CNE, Assistant Professor, DUSON  
 Sevda Mirza, ADN, RN, Geriatric Resource Nurse, DUHS Nursing

NICHE CONFERENCE NYU

---

---

---

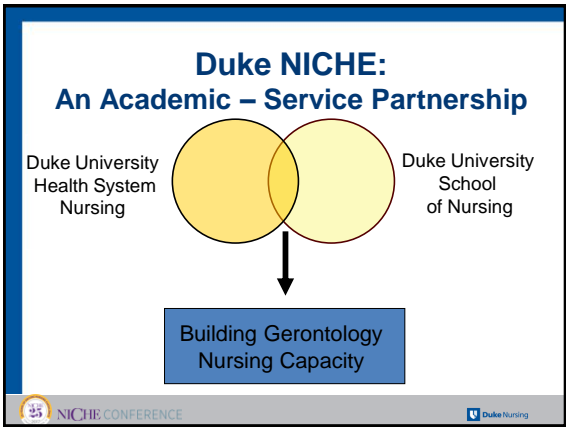
---

---

---

---

---




---

---

---

---

---

---

---

---

**GERO BOOT CAMP (GBC)**

A 4 hour simulation immersion experience for pre-licensure nursing students in an accelerated BSN program (ABS N).

Goals of GBC

- Prepare students for geriatric clinical experiences
- Increase knowledge of geriatric assessment

NICHE CONFERENCE Duke Nursing

---

---

---

---

---

---

---

---

## Four Student Learner Activities

1. Community assessment and resources
2. Acute care geriatric practice
3. Sensory changes in the older adult
4. **Geriatric assessment skills**



NICHE CONFERENCE



---

---

---

---

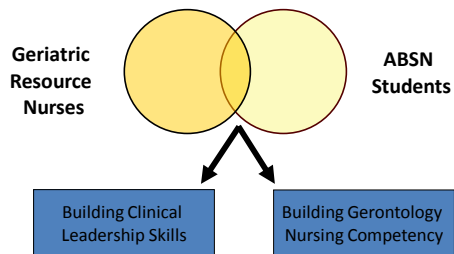
---

---

---

---

## Geriatric Assessment Skills



NICHE CONFERENCE



---

---

---

---

---

---

---

---

## Geriatric Assessment Skills Simulation



- Student Groups of Two- Three
- Senior Community Volunteer
- Geriatric Resource Nurse Coach



NICHE CONFERENCE



---

---

---

---

---

---

---

---

## Student Expectations

- “Enter” patient room in groups of two-three
- Interact with older adult in a nonthreatening conversational format
- Complete a comprehensive geriatric assessment
- Understand key differences in assessment of older adults

---

---

---

---

---

---

---

---

## Geriatric Resource Nurse Expectations

- Coach students regarding verbal and nonverbal communication strategies
- Discuss normal aging changes
- Model use of standardized assessment tools
- Share experiences
- Contribute to post conference debriefing

---

---

---

---

---

---

---

---

## ABSN student WINS

Feedback from students:

- Appreciated being coached by a frontline RN in a non-clinical setting
- Learned subtle differences in assessment approaches
- Learned how to adapt communication techniques based on normal aging changes and with those with cognitive impairment
- Realized importance of focusing on geriatric syndromes and to look for red flags during assessment such as change in behavior, history of falls, medication changes

---

---

---

---

---

---

---

---

## Geriatric Resource Nurse WINS

- Opportunity to role model for future RNs
- Dispel myths about aging
- Develop teaching skills
- Satisfaction with opportunity to contribute to the next generation of nurses
- Instill excitement for geriatric nursing
- Involved with improving future Gero Boot Camps



NICHE CONFERENCE



---

---

---

---

---

---

---

---

## Geriatric Resource Nurse WINS

- Enhances professional portfolio
- Serves as community/volunteer service activity
- Contributes to advancement on clinical ladder
- Exposure to nursing education opportunities such as formal clinical instructor roles
- Future collaborative efforts



NICHE CONFERENCE



---

---

---

---

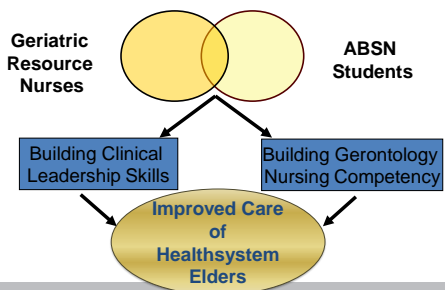
---

---

---

---

## Ultimate Win



NICHE CONFERENCE



---

---

---

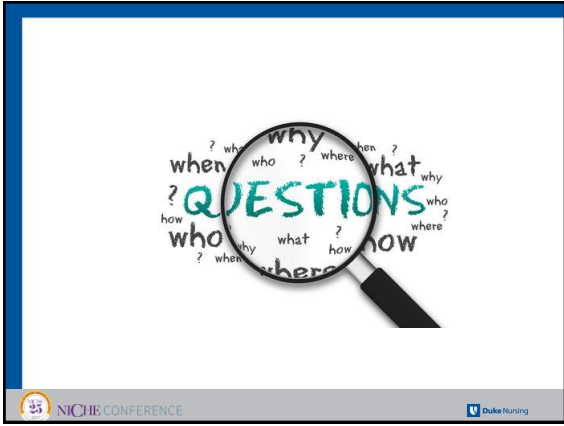
---

---

---

---

---



---

---

---

---

---

---

---

---