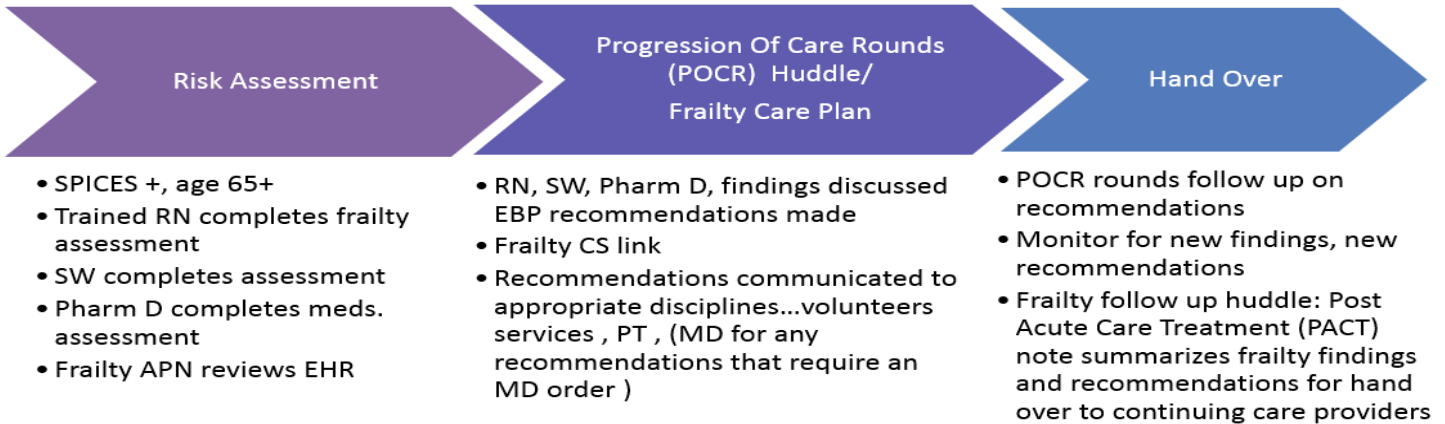


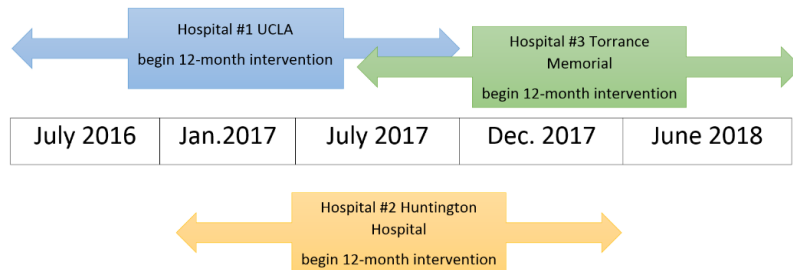
Systems Addressing Frail Elders (SAFE) Care – A multisite collaboration in caring for older adults

Lianna Z. Ansryan, RN-BC, CNS, MSN, Linda Burnes Bolton DrPH, RN, FAAN, Harriet Aronow PhD, Flora Haus MSN, RN-BC, NEA-BC, Cathy Ward RN, PhD, NEA-BC Gloria Sanchez RN, BSN, MBA, NEA-BC
 Barbara LeQuire MSN, CNS, PNP

SAFE Care Model



SAFE Care Multisite Collaboration



SAFE Care Implementation

Building Capacity: A key aspect of SAFE Care implementation is to build an internal stakeholder team. Members may include: nursing, social work, case management, pharmacy, patient volunteer, chief medical officer, and director of medicine, rehab services (OT, PT, ST), research, and information technology.

Organizational Changes: 1) Obtain NICHE designation, 2) Electronic Health Record Enhancements, 3) Interprofessional workflow integration

Results

We anticipate the collaborating sites will demonstrate similar results in integrating SAFE Care model elements into the current workflow. The metrics of success include reduction in length of stay and adverse events. The organizational processes are being closely monitored and evaluated, as well, to support production of a process-oriented tool kit for further spreading the model.

Contact information: Lianna.Ansryan@cshs.org